

STOKESDALE SHOPPING CENTER
8210 US Hwy 158
Stokesdale, NC 27357



1007 Battleground Avenue, Suite 401
Greensboro, NC 27408
336-379-8771

Bill Strickland, Broker
bstrickland@bipinc.com
P: 336-369-5974



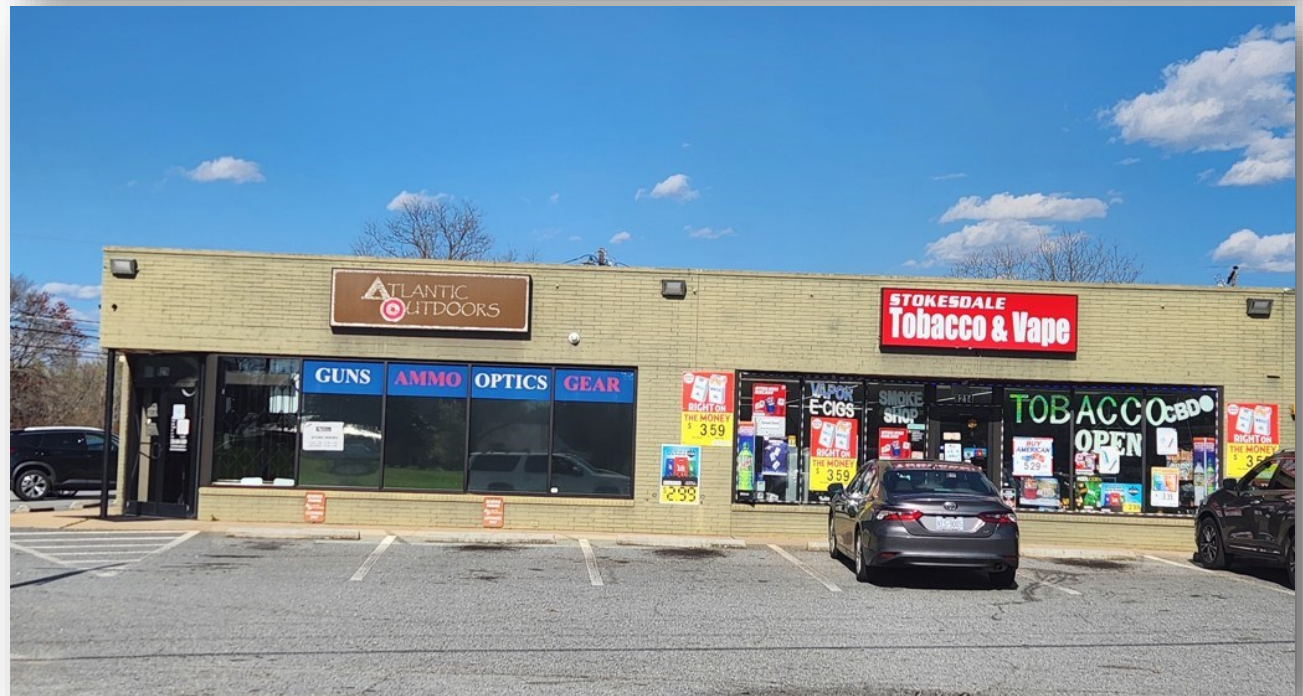
8210 US Hwy 158
Stokesdale, NC 27357

PROPERTY FEATURES

Five tenant retail strip center with free standing retail building included. Varied terms through February 2028.

Proforma NOI - \$108,188

- Total Building SF: 10,712 +/- SF
- Parking: 30 +/- spaces
- Ceiling Height: 8'
- 1.91 +/- Total Acres including 0.88 Acre septic lot at 8403 Lyman Street
- Zoning: GB
- Year Built: 1958 Renovated 2016
- Sales Price: \$1,750,000





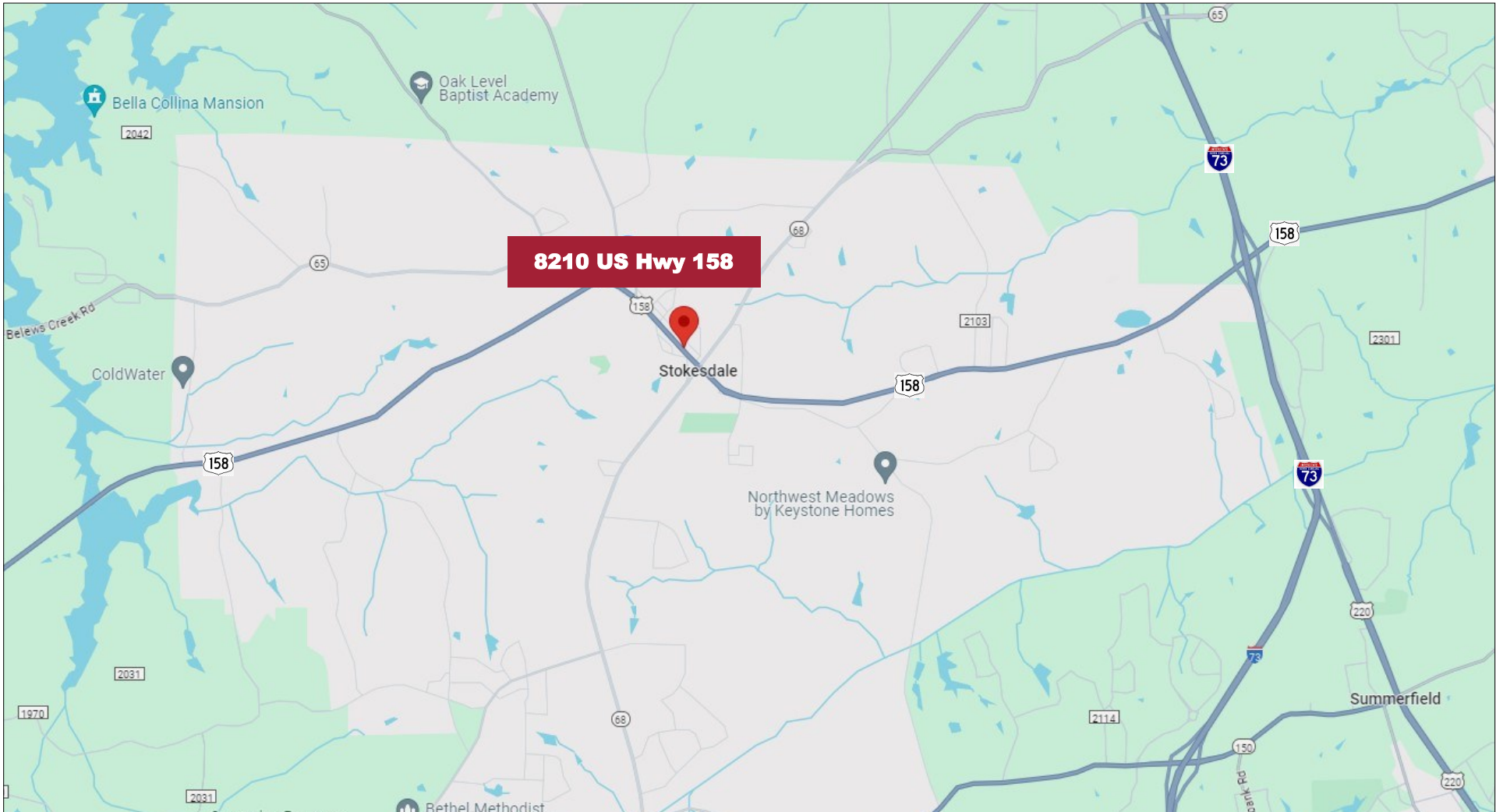
Additional parking behind Strip Center



Five tenant retail shops



Free standing retail building included in sale



1007 Battleground Avenue, Suite 401, Greensboro NC 27408

The statements and figures herein while not guaranteed are secured from sources believed to be authoritative. This offering is subject to change of price, prior lease or sale and or withdrawal without notice. Prospects should verify all information.