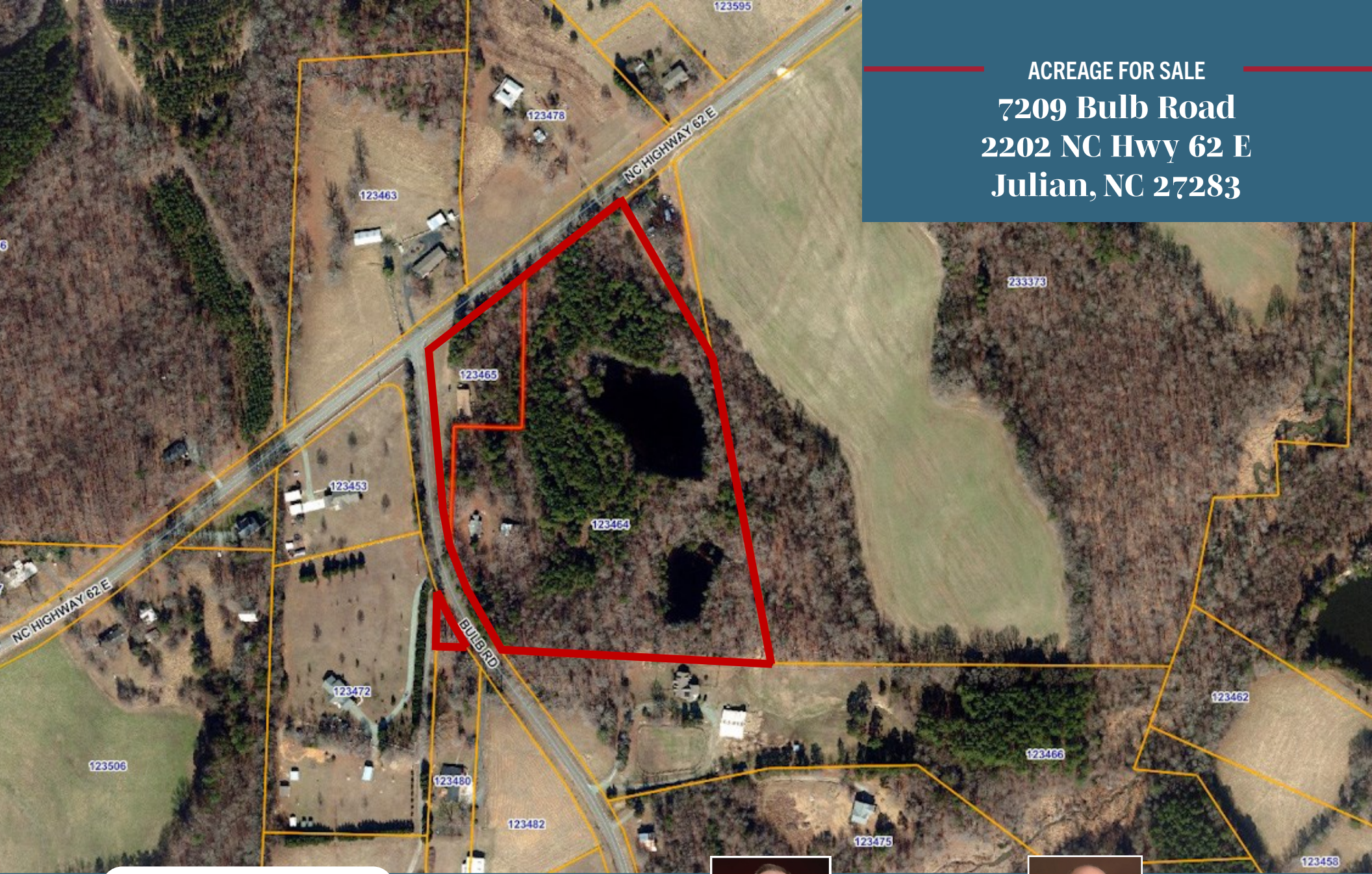


ACREAGE FOR SALE
7209 Bulb Road
2202 NC Hwy 62 E
Julian, NC 27283



1007 Battleground Avenue, Suite 401
Greensboro, NC 27408
336-379-8771



Bill Strickland, Broker
CCIM, MBA
bstrickland@bipinc.com
P: 336-369-5974



Tim Knowles, Broker
tknowles@bipinc.com
P: 336-541-5508
C: 336-215-5716



7209 Bulb Road, Julian, NC 27283

Sale Price \$457,800

2202 NC Hwy 62 E., Julian, NC 27283

Sale Price \$47,950

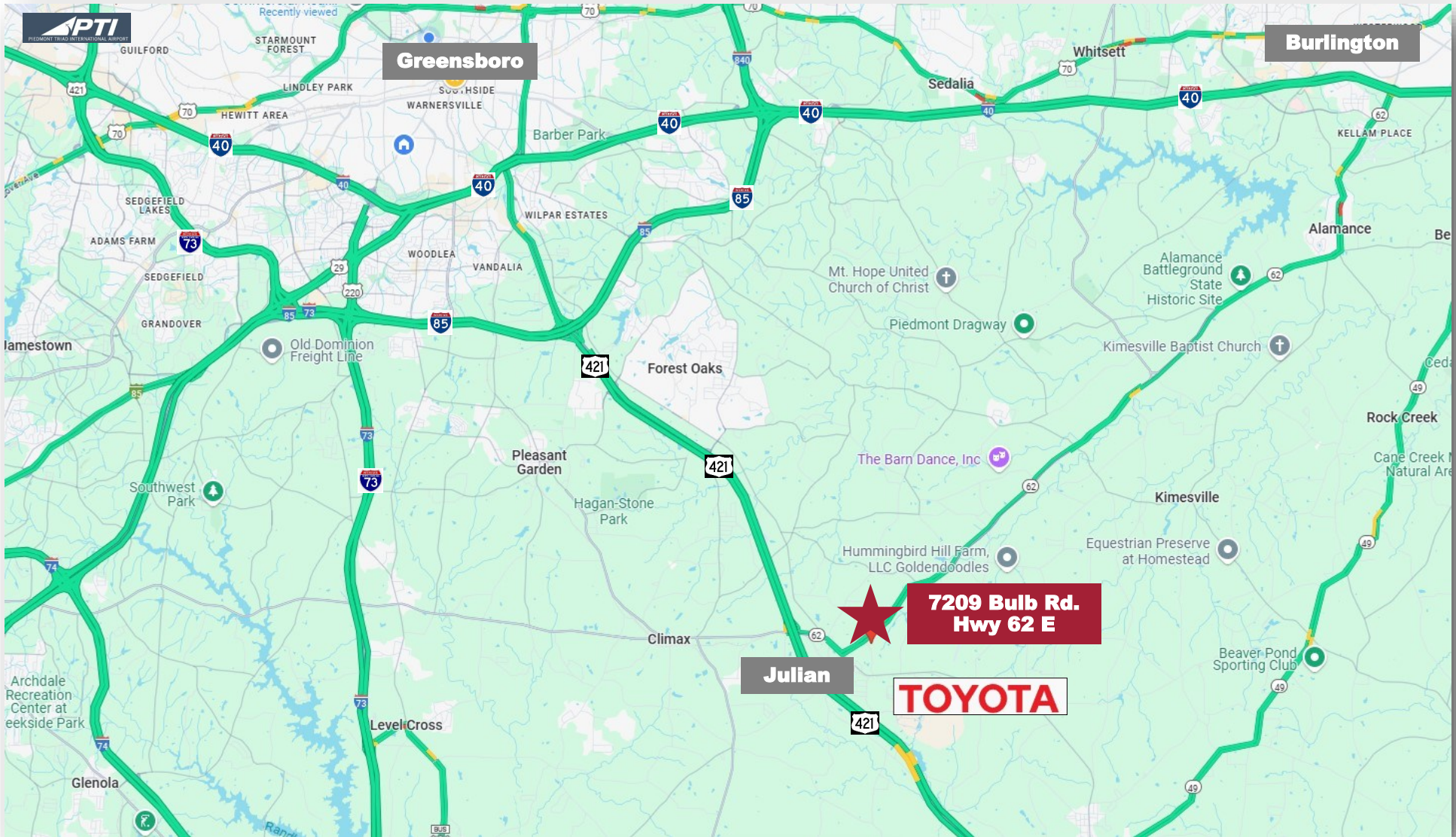
PROPERTY FEATURES

- Two parcels being sold for a total of 14.45 acres in prime development location within 1 mile of Toyota Battery Plant
- Properties are being sold as potential commercial development with current land use plan requiring any new development be a use that supports Toyota
- Zoned: AG
- House on property of no value

LOCATION

- This property is located just north of the Toyota Battery Plant at the Greensboro/Randolph Mega Site.
- The PTI Airport is a 30 minute drive.
- Interstate 421 is one mile from the property with easy access to I-40 I-85, I-73 and I-840.





1007 Battleground Avenue, Suite 401, Greensboro NC 27408

The statements and figures herein while not guaranteed are secured from sources believed to be authoritative. This offering is subject to change of price, prior lease or sale and or withdrawal without notice. Prospects should verify all information.