

FOR LEASE
6905 Downwind Road
Suite I
Greensboro, NC 27409



1007 Battleground Avenue, Suite 401
Greensboro, NC 27408
336-379-8771

Contact: Austin Hill, Broker
ahill@bipinc.com
P: 336-541-5510

6905 Downwind Road Suite I

Property Features

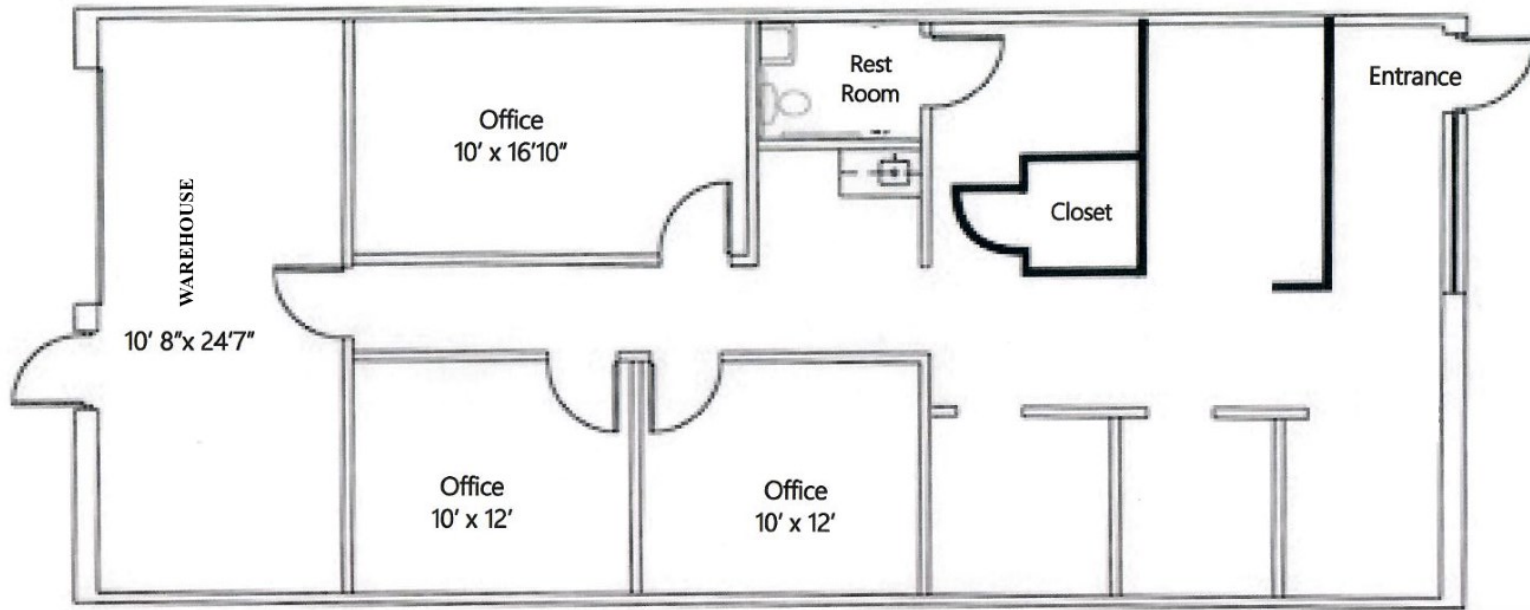
- Size: 1,500 +/- SF
- Rate: \$2,000/month, Modified Gross
- Drive-in/Grade-Level Doors: One 8' x 10'
- Zoning: Light Industrial (LI)
- Close proximity to I-40, I-73, and other major thoroughfares
- Convenient to PTI Airport and major area employers
- Well maintained; Locally owned and managed

Directions

Head West on W. Friendly Avenue, left onto Downwind Road. Property is on the right.

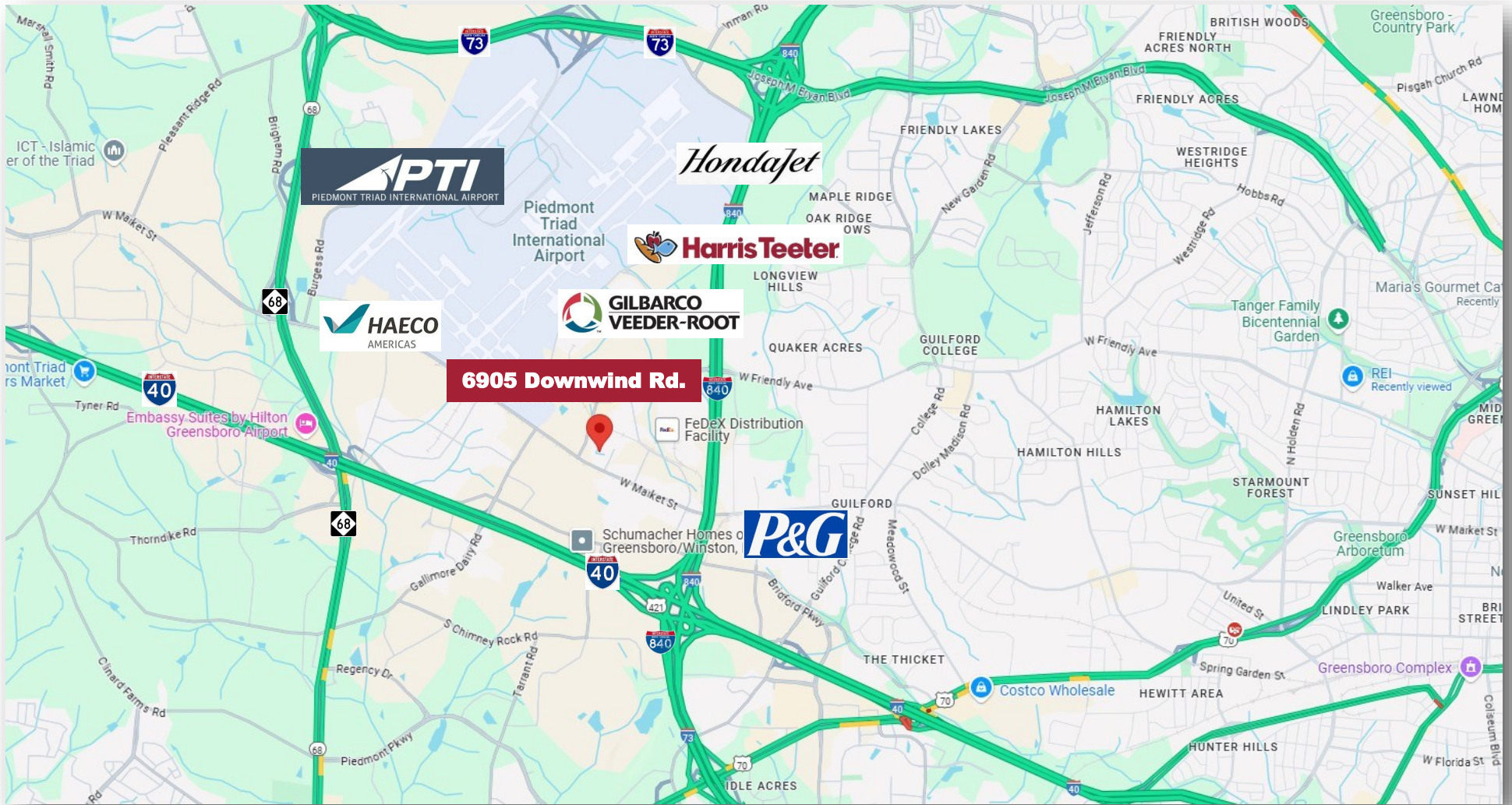






Suite I
1,500 SF





1007 Battleground Avenue, Suite 401, Greensboro NC 27408

The statements and figures herein while not guaranteed are secured from sources believed to be authoritative. This offering is subject to change of price, prior lease or sale and or withdrawal without notice. Prospects should verify all information.